



ENRICHMENT OF CONSISTENT DATA ALLOCATION IN SOCIAL NETWORK

Thythy Praveen¹, V.Sabitha²

¹M.Tech Student, Dept of CSE, RRS College of Engineering & Technology, Muthangi (V), Patancheru (M), Hyderabad, T.S, India

²Assistant Professor, Dept of CSE, RRS College of Engineering & Technology, Muthangi (V), Patancheru (M), Hyderabad, T.S, India

ABSTRACT:

Online social networks offer each member a web space to gather and administer their individual data together with the information of profile in addition to content. The individuals who are in interaction with others can add information to the data space and make their contribution in different interactive actions. Quite a lot of schemes concerning access control were introduced to preserve specifications of fine-grained approval in support of online social system. Summary contribution is an interesting characteristic concerning several social networks towards holding up community submission through creators of third-party towards generating extra functionalities put up on the profile of user for social networks. In multiparty admission, social system is depicted all the way through an alliance system; a congregation of consumer information. Illustration of multiparty accession is constructed for detaining interior depiction of requirements of mutual support which are not up to point by achieving access control for social system.

KEYWORDS: *Multiparty access, Social networks, Fine-grained authorization, Third-party.*

1. INTRODUCTION:

Social set of connections is symbolized with an association system; set of customer assemblage with an assortment of client

information. Regarding the protection of privacy and scalability centralized online social networks raise concerns. Several networks are developed within feature

organizational construction that is believed to sustain the standard flow of work. Relationship sharing is another characteristic of social networks which client contributes to associations through former members. User needs are involuntarily routed to the close by boundary position in a contented allocation network, as a final point conveying content with the most excellent possible presentation. For maintaining the networks there should be a possibility for necessary function about network, and should maintain a balance between the completeness of being with in a network and the superiority of being an outsider. A variety of research studies illustrate that online social network users struggle with a variety of issues such as dented reputations, interpersonal variances, redundant contacts, context collision and so on. In support of supervision and directions, associations may be based on confidence relations, other may be a freely association based on a general awareness, and finally may be dedicated to entirely socializing with associates within the workplace may be based on the responsibilities of present job. An agile mechanism of admission managing in the circumstance of multiuser similar to online social networks have to permit numerous

manager, who is connected through the collective information, to identify policies of admittance managing. Permitting a combined endorsement organization of information contribution within online social networks is necessary in support of the policies of cooperative admittance managing to control admission above collective information. Quite a lot of schemes concerning access control were introduced to preserve specifications of fine-grained approval in support of online social system.

2. METHODOLOGY:

Online social association encompass an important characteristic permitting consumer predetermined in grouping; ubiquitously each group contain an exceptional agreed name which permits customer of online social network towards effortlessly discovering former customer in distributing detailed comfort, and political orientation. They suggest each member a web space to gather and administer their individual data together with the information of profile in addition to content and are illustrated by an association system, client assemblage, an assortment of customer information. Summary contribution is an interesting characteristic concerning several

social networks towards holding up community submission through creators of third-party towards generating extra functionalities put up on the profile of user for social networks. In the recent times, Quite a lot of schemes concerning access control were introduced to preserve specifications of fine-grained approval in support of online social system which merely permit particular organizer, reserve possessor, and towards identifying policies of admission managing. To make possible a combined endorsement running of information distribution within online sharing networks is necessary in support of managing policies of multiparty admittance to be present in a position to manage admission over collective information, demonstrating endorsement needs from numerous connected clients [14]. Hosting individual information upon peer is further confidentiality safeguarding to entrusting managed towards a third-party provision contributor. Privacy of Social associations relates to the issues that users elevate and to the harms that they practice when technically mediated communications disturb social limits. In multiparty admission, social system is depicted all the way through an alliance system; a

congregation of consumer information. An admittance organizing process within multi-user environment comparable to social networking have to authorize abundant managers, linking by the collective information; towards identifying admittance managing strategy. The label connected with each edge indicates the category of the association. The category of supported associations depends on the specific online social networks and its purposes.

3. MANAGING OF DATA PROTECTION AMONG MULTIPLE USERS:

Social networking websites includes greatly extended the range of possible communications, rely on centralized storage and functionality on the other hand, centralized systems raise concerns concerning the fortification about confidentiality within the circumstance of increasing support of client. They can be represented by, a set of user groups and an assortment of user information where each user articulates a list of other users with whom a relationship is shared and it comprises an extensive range of tools for people to put together an understanding of neighbourhood in an intended way. To allow

a combined approval running of information contribution within online social networks, is necessary in support of the policies of cooperative admittance organizing possibly ready to control admission above collective information, signifying the needs commencing the users of manifold linked. An online social networking is symbolized with an association system; set of customer assemblage with an assortment of client information shown in fig1. The design should be comprehensive by an overlay system stratum on working scheme and complex subsystem; a transfer organization stratum. Illustration of multiparty access is constructed for confining inner description of requirements of mutual endorsement that are not up to point with surviving systems concerning access control for social system. Connection complex of online social network is graph of engaged labelled, somewhere every nodule signifies customer in addition to each edge representing an association among clients. The brand connected by every rim signifies relationship category. The association network of an online social networking is focussed made grid, where every nodule indicates consumer with every perimeter signify a correlation among clients.

Associations may be based on confidence relations for supervision and directions, other may be a freely association based on a general awareness, and finally may be dedicated to entirely socializing with associates within the workplace, may be based on the responsibilities of present job. Boundary path signifies facilitating the edge early nodule set up the association and edge terminal node confirms the connection. The numerals of sustained relations rely on precise online social networks and its functions. Primary nodule of edge set up association and furthermore edge fatal nodule recognizing connection was represented by the edge direction. Exclusive of any approval from additional group members, users can link in groups and those makes available for each member a web space to accumulate and supervise their individual data. The overlay network layer would make available process communication steering, node exploration forces, lining by confined assets and fundamental structure. Based on changing interests, networks may be very dynamic or stable and the users are continually combining or leaving the networks. The usage of mechanism about cooperative admission will improve agility which is

intended in support of modifiable contribution of data within online social networks, it may possibly diminish the assurance consequences of scheme agreement payable to cause which the conflicts of permission and seclusion are determined benevolently. Concentrating user data under a single administrative domain is the data of centralized online social networks stored.

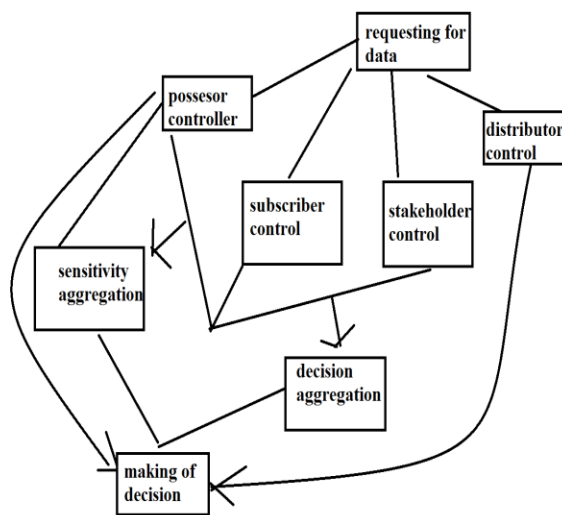


Fig 1: An overview of Multiparty Access Control

4. CONCLUSION:

Online social network users struggle with a variety of issues such as dented reputations, interpersonal variances, redundant contacts, context collision. Quite a lot of schemes concerning access control were introduced to preserve specifications of fine-grained approval in support of online social system which merely permit particular organizer,

reserve possessor, and towards identifying policies of admission managing. The usage of mechanism about cooperative admission will improve agility which is intended in support of modifiable contribution of data within online social networks. An online social networking is symbolized with an association system; set of customer assemblage with an assortment of client information. Illustration of multiparty access is constructed for confining inner description of requirements of mutual endorsement that are not up to point with surviving systems concerning access control for social system.

REFERENCES:

- [1] J. Choi, W. De Neve, K. Plataniotis, and Y. Ro. Collaborative face recognition for improved face annotation in personal photo collections shared on online social networks. *Multimedia, IEEE Transactions on*, 13(1):14–28, 2011.
- [2] A. Squicciarini, S. Sundareswaran, D. Lin, and J. Wede. A3p: adaptive policy prediction for shared images over popular content sharing sites. In *Proceedings of the 22nd ACM conference on Hypertext and hypemedia*, pages 261–270. ACM, 2011.
- [3] A. Besmer and H. Richter Lipford. Moving beyond untagging: Photo privacy in a tagged world. In *Proceedings of the 28th international conference on Human factors in computing systems*, pages 1563–1572. ACM, 2010.
- [4] “Multiparty Access Control for Online Social Networks: Model and Mechanisms”, Hongxin Hu, Gail-Joon Ahn, and Jan Jorgensen, 2013

- [5] B. Carminati and E. Ferrari. Collaborative access control in online social networks. In *Proceedings of the 7th International Conference on Collaborative Computing: Networking, Applications and Worksharing (CollaborateCom)*, pages 231–240. IEEE, 2011.
- [6] L. Jin, H. Takabi, and J. Joshi. Towards active detection of identity clone attacks on online social networks. In *Proceedings of the first ACM conference on Data and application security and privacy*, pages 27–38. ACM, 2011.
- [7] P. Fong, M. Anwar, and Z. Zhao. A privacy preservation model for facebook-style social network systems. In *Proceedings of the 14th European conference on Research in computer security*, pages 303–320. Springer-Verlag, 2009.
- [8] A. Mislove, B. Viswanath, K. Gummadi, and P. Druschel. You are who you know: Inferring user profiles in online social networks. In *Proceedings of the third ACM international conference on Web search and data mining*, pages 251–260. ACM, 2010.
- [9] L. Lam and S. Suen. Application of majority voting to pattern recognition: an analysis of its behavior and performance. *Systems, Man and Cybernetics, Part A: Systems and Humans, IEEE Transactionson*, 27(5):553–568, 2002.
- [10] P. Fong. Relationship-based access control: Protection model and policy language. In *Proceedings of the first ACM conference on Data and application security and privacy*, pages 191–202. ACM, 2011.
- [11] H. Hu, G.-J. Ahn, and J. Jorgensen. Detecting and resolving privacy conflicts for collaborative data sharing in online social networks. In *Proceedings of the 27th Annual Computer Security Applications Conference, ACSAC '11*, pages 103–112. ACM, 2011.
- [12] A. Squicciarini, F. Paci, and S. Sundareswaran. PriMa: an effective privacy protection mechanism for social networks. In *Proceedings of the 5th ACM Symposium on Information, Computer and Communications Security*, pages 320–323. ACM, 2010.
- [13] B. Viswanath, A. Post, K. Gummadi, and A. Mislove. An analysis of social network-based sybil defenses. In *ACM SIGCOMM Computer Communication Review*, volume 40, pages 363–374. ACM, 2010.
- [14] E. Zheleva and L. Getoor. To join or not to join: the illusion of privacy in social networks with mixed public and private user profiles. In *Proceedings of the 18th international conference on World wide web*, pages 531–540. ACM, 2009.
- [15] B. Qureshi, G. Min, and D. Kouvatso. Collusion detection and prevention with fire+ trust and reputation model. In *Computer and Information Technology (CIT), 2010 IEEE 10th International Conference on*, pages 2548–2555. IEEE, 2010.